

CR/jb

17th January 2025

Y6 Residential Visit – 2025

Dear Parents and Carers,

It is that time of year when we need to think about finalising booking arrangements for the Year 6 Residential Trip in 2025. Due to the continued successes of our past residential trips to PGL, we have made a provisional booking for all current Year 5 children for next year at the Osmington Bay location. We have visited Osmington Bay for the last three years - pupils and staff talk very highly of the facilities and trip. Located at the heart of the Jurassic Coast, in Weymouth, Dorset, Osmington Bay Adventure Centre has direct access to the beach and stunning views across the sea. By going in October last year we were lucky enough to secure the opportunity to go sailing and kayaking at the Olympic and team GB water sports centre. Whilst this is not a guarantee we will certainly make this request again!

Going on a residential trip has huge benefits for children. The activities they experience are very hard to replicate in other ways and often boost confidence through adding to the children's sense of accomplishment. Being away from home is great for independence and an essential part of development. We believe these aspects have always been true and continue to be even more so after the legacy of a pandemic. The opportunity we have to go in October will also help us to build an excellent team spirit for what lies ahead in the children's last year of primary education.

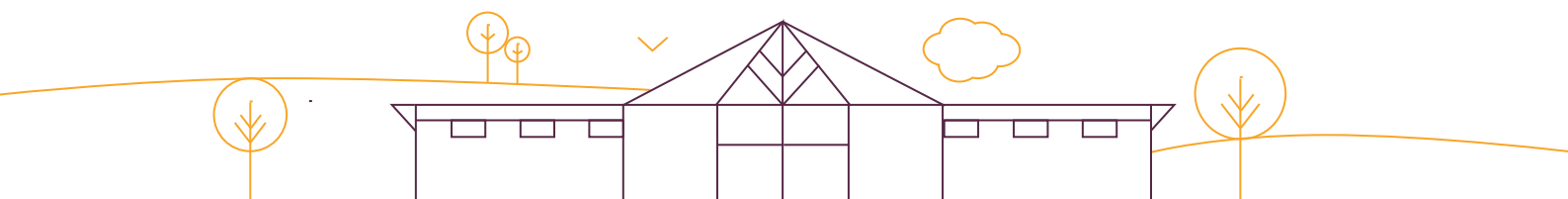
The date of our booking is **Monday 20th October 2025** until **Friday 24th October 2025**. The total cost of the trip is approximately £445.00 which includes the PGL cost, bedding and coach transfers. This cost may vary slightly as we have assumed all children will be attending and we are awaiting quotes from coach companies.

We very much hope that this is an opportunity you will want your child to be part of. We fully understand that this is not an inexpensive trip and the sum of money involved may well cause some difficulty and concern for families especially during these current times. If this is something concerning your family, then we are keen to hear from you so that we can confidentially discuss how we may be able to support you. It is our intention that, ideally, all the children in our current Year 5 are able to go on this residential. We are looking into arranging a year group wide fundraising opportunity to support this trip to go ahead for all children.

With your concerns or queries in mind, we have devised a Google Form for each family to complete to give us a clear indication of the intention of your child to attend the residential trip and the financial constraints this trip may cause our families. Please could all parents complete the Google Form at the link below by **Friday 24th January 2025 at the latest**.

<https://forms.gle/wXd9MFzbukaZUHrg7>

This visit is an Adventure Course and will have a physical aspect where the children will experience a range of activities which could include climbing, abseiling, raft building, archery and fencing, to name but a few. Children will be staying in secure four-bed chalets each with their own shower/toilet. Throughout the night members of the PGL staff will be on duty patrolling the grounds around the accommodation. The children will remain under the direct supervision of Berrywood staff at all times, and the colleagues leading this trip are senior members of staff with considerable experience of residential visits. There will be three healthy meals a day, each offering a selection of hot and cold foods with all dietary needs well catered for.



We believe residential visits have significant value for the development of all children and we strongly recommend that, if possible, all Year 5 pupils take part in what promises to be a most exciting and rewarding week. The residential trip provides a fantastic opportunity to build a platform for developing the whole child; one who is able to refer to overcoming physical challenges and use these as a model for overcoming difficulties in more academic learning.

Please complete the Google Form <https://forms.gle/wXd9MFzbukaZUHrg7> by **Friday 24th January** to indicate whether you would like your child to take part in this visit. A member of the Senior Leadership Team will be in touch during the week beginning Monday 27th January 2025 to discuss any queries you have raised on the Google Form.

We will require a non-refundable deposit of £60, by Friday 7th February 2025, to secure your child's place, which can be paid online at www.scopay.com/berrywood-pri

- | | |
|--|--|
| ➤ Friday 7th February 2025 | £60.00 non-refundable deposit |
| ➤ Friday 25th April 2025 | £80.00 second instalment |
| ➤ Friday 18th July 2025 | final balance due (to be confirmed nearer the time) |

After your initial deposit of £60, we are happy to receive weekly instalments of approximately £16.70 per week. If you would like to take up this option, please contact the school office to let us know.

Please note that by agreeing to book a place for your child, you are agreeing to pay the instalments as laid out above. If you wish to cancel your child's place after booking, the cancellation fees charged by PGL are as follows:

- | | | |
|---|---|--------------------------|
| ➤ Cancellation 57 days or more prior to departure | | Initial £60 deposit only |
| ➤ Cancellation 56 – 29 days prior to departure | - | 60% of total cost |
| ➤ Cancellation 28 – 15 days prior to departure | - | 80% of total cost |
| ➤ Cancellation 14 days or less prior to departure | - | 100% of total cost |

If cancellation falls within the terms of PGL's insurance (illness or parental redundancy) it may be possible to make a claim but there is a £35 non-refundable excess for every claim. Please also note that PGL reserve the right to charge a £25 administration fee. Please visit www.pgl.co.uk for further information, including the book with confidence details.

Further information to follow; medical and consent form, dietary requirements form, code of behaviour contract, travel synopsis, suggested kit list and Year 6 residential meeting information.

Please click the link below for a virtual tour of Osmington Bay.

<https://www.pgl.co.uk/Files/Templates/Designs/PGLCore/res/swf/virtual-tour/vtour-osmington/tour.html>

Yours sincerely,

Chris Reilly
Headteacher