

### Pupil Achievement at Berrywood

Pupil achievement at Berrywood has never been as high as it currently is. We are so proud of all the children and staff for creating an overall picture of performance that is significantly ahead of national and Hampshire averages. That this has been achieved whilst also developing a highly creative curriculum – cooking, gardening, sports, arts, crafts and the performing arts opportunities – is a source of particular pleasure and pride. Well done and thank you to everyone for the monumental effort and commitment that goes into ensuring this is, by any popular measure, a great school.

#### School Performance Data: -

	<b>Berrywood</b>	<b>National</b>
Year R 'Good Level of Development' (GLD)	72%	67%*
Year 1 Phonics Screening	82%	79%*
Key Stage 1 Phonics Screening	89%	81%*
Year 4 Multiplication Check (average score)	22.5	20.2*

\*These are 2023 national averages, as figures for 2024 are not yet verified.

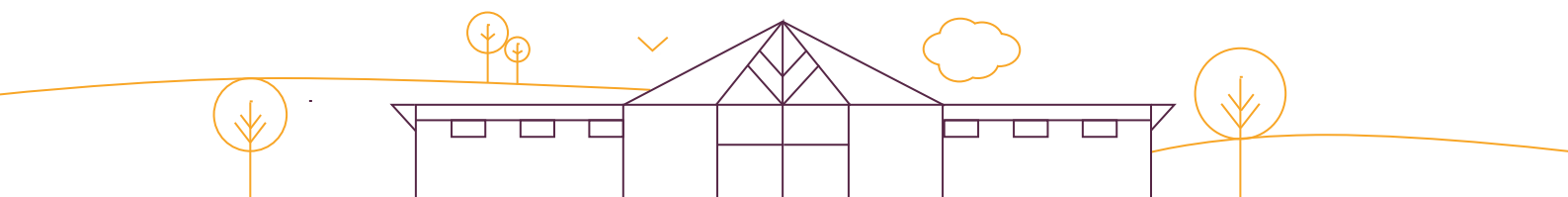
As always, there is quite a lot of SATS data for **Year 6 pupils:** -

<b>Subject</b>	<b>Expected Standard (Berrywood)</b>	<b>Expected Standard (National)</b>	<b>Greater Depth (Berrywood)</b>	<b>Greater Depth (National)</b>
Combined (Reading, Writing & Maths)	<b>78%</b>	<b>61%</b>	<b>11%</b>	<b>8%</b>
Reading	<b>88%</b>	<b>74%</b>	<b>43%</b>	<b>28%</b>
Writing	<b>84%</b>	<b>72%</b>	<b>16%</b>	<b>13%</b>
Maths	<b>84%</b>	<b>73%</b>	<b>39%</b>	<b>24%</b>
Spelling, Punctuation & Grammar	<b>84%</b>	<b>72%</b>	<b>48%</b>	<b>32%</b>

Please note that these national averages are 2024 figures. Clearly, a really impressive data set that will compare very favourably with most schools.

### Year 6 Achieve Performance

A burst water main in Wildern Lane put an end to our plans for the Year 6 Achieve performance yesterday. Undaunted though, we have managed to perform a logistical



juggling act, and are hopefully enjoying the performances pretty much at the time that many of you may be reading this.

Good luck to all the Year 6 children and staff involved, and well done for all the amazing effort and hard work that has gone into the preparations.

#### **Bake Off Fun**

A huge thank you to the hundreds of families who took part in our recent Bake Off competition. The entries were so many and so impressive. We raised over £500 in sales, and will definitely be looking to make this a treasured annual event. If you haven't yet seen the Berrywood TV take on the event, then please do check this out.

#### **School Meal Price Increase**

Hampshire County Council Catering Services have let us know that the cost of a school meal will be increasing in September by 20 pence. The cost of a school meal will be **£3.20**