

21st November 2023

Dear Parents and Carers,

The Berry Theatre – Father Christmas & A Story with Santa at Hedge End Train Station

At Berrywood we aim to offer your children the fullest possible education, with a varied exciting curriculum. As part of this, projects are often supported by educational visits or visitors, which I know are thoroughly enjoyed by everyone.

The school budget finances all the 'essentials' that are needed to ensure the National Curriculum is delivered, but cannot support these visits. It is for this reason that I have to ask parents if they are willing to contribute towards the cost where applicable. If you are unable to contribute the full amount, any contribution received would work towards making the visit more viable. Should a number of parents not be prepared to make a contribution then, unfortunately, the visit may not be able to proceed.

Year R have planned a visit to The Berry Theatre at Wildern to watch a performance of Father Christmas. The visit will take place on Wednesday 13th December. To enable this to happen, we need parent volunteers to help us on our walk. Please indicate on the Google form if you are available to help.

We aim to leave school at approx. 9:45am and we anticipate the walk will take around 20-30 mins. The performance begins at 11:00 and will last approximately 1 hour at which time we will return to school for lunch.

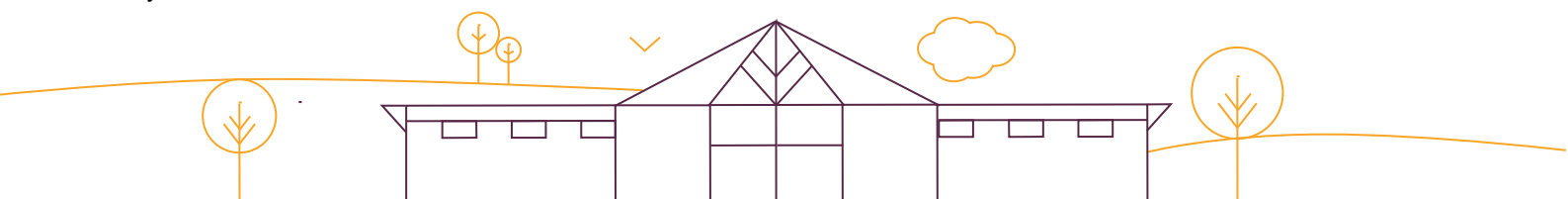
As we will be likely to miss our lunchtime slot we are thrilled to be able to offer the children a picnic lunch bag on this day. The lunch will include a cheese or ham roll, a piece of fruit, and a biscuit or cake. Please complete the Google form, link below, to enable us to provide the correct number of packed lunches on the day. If for any reason you feel you need to provide your child with their lunch, please ensure it is in a named paper bag and includes healthy options as listed above. Minimal packaging please so we can recycle. Please note; no chocolate, nuts, crisps and of course sweets please.

The income generated from school trips has declined year on year, despite the costs increasing significantly. This has led to the school making a loss to the value of tens of thousands of pounds. I would also like to stress that **schools are not allowed to make a profit from any trip or visitor** and therefore, in the interests of openness, a breakdown of the cost of this trip is shown below.

Activity	Cost
Cost of entry	£1104.00
Staffing Costs	
Total	£1104.00
Divided by 74 Children	£14.918 per head

A voluntary contribution of £14.92 is required to help cover the cost of this trip, please log on to www.scopay.com/berrywood-pri to make payment. Regulations state, we are unable to take children on a trip without a completed form. Please complete the Google form consenting for your child to attend the trip by **Monday 4th December** at the latest.

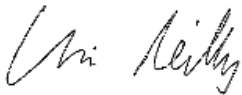
We have also been given the wonderful opportunity to take the children to Hedge End Train Station for a story with Santa. This will take place on Friday 15th December creating a magical ending to the children's first term at Berrywood.



Each Year R class will be walking to the train station at staggered times during the course of the morning and we will be back before lunchtime. The walk should take approximately 15-20 minutes, where we will then listen to a special story from Santa for approximately 20 minutes before we return to school. To enable this to happen, we also need parent volunteers to help us on our walk. **Please let us know on the form if you are available and a member of the Year R Team will contact you.**

<https://forms.gle/PWF9ZeCEaHzV8fUq5>

Yours sincerely,



Chris Reilly
Headteacher

