

Newsletter 20th October 2023

Nothing but Positives

Our Harvest Festival collection was bigger than ever this year thanks to your incredible generosity and willingness to support. Normally we fill two tables in the hall, but this year we managed five! The Southampton City Mission were blown away with the size of the donation, and specifically asked that I pass on their thanks to the parent community.

When we first started our association with Southampton City Mission, they had one foodbank in the city which was open one day a week. They now have five that are open every week day, and have also introduced new low cost 'markets' which too provide such needed food and basics support to thousands of families.

On a similar theme, our annual 'Shoe box' appeal was again a big success this year with 101 gift laden boxes making their way to orphaned or vulnerable children in Macedonia, Romania and Lithuania. Thank you so much for your efforts and kindness. We know that decorating these boxes is something that your children very much enjoy doing, as well as the act of giving which is such a valuable quality for any of us to grow.

Year 6 Residential – A Glowing Success

A massive well done to all the Year 6 girls and boys for so successfully completing the residential. The staff who accompanied them were blown away by their positive attitudes, can do spirits, respectful behaviour, wonderful attitudes and friendliness throughout the week. Definitely one of our most successful trips ever, and hopefully a foreteller of many more enjoyable achievements for this cohort throughout the year ahead. Thank you all for making us so proud!

Market Day

Children and members of staff braved the terrible weather on Wednesday in pressing ahead with our first 'Market Day' of the year. Thank you to the many parents who queued early to attend, this now much treasured event. There is so much in terms of skills and knowledge being gained across the whole curriculum through the creation of products for Market Days, and there are increasing numbers of pupils regularly involved in this exciting context for learning. It is not an exaggeration to say that all pupils benefit from the 'school within a garden' ethos that truly does permeate pretty much everything that we do.

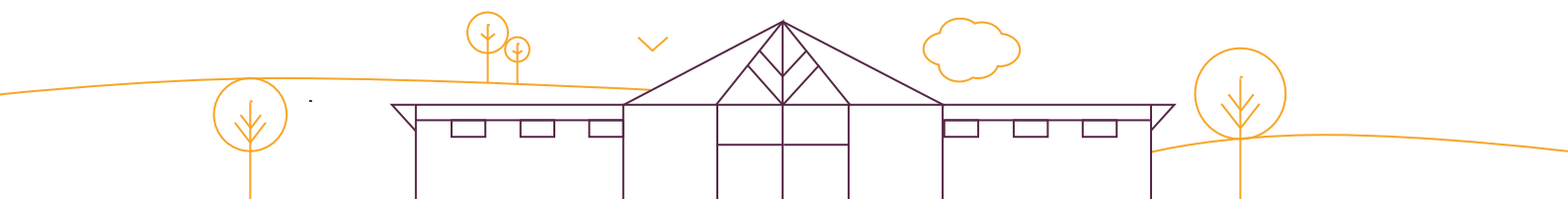
None of this would be possible without the teams of Special Needs Assistants working across KS1 & KS2 specifically on Market Days projects. Their inventiveness, care and skill sets have been the key factor in the success of this innovative venture. And this is all ably overseen by Mrs Woods, who drives the curriculum aspects as Assistant Head, and Miss Spencer our SENDCo.

Berrywood TV

You will today receive an emailed link for the first Berrywood TV program of the new school year. This is a short (but hopefully sweet) trailer program giving a taste of what is to come later in the viewing season. As always, we hope that the fabulous characters of the pupils involved shine through!

New Deputy Headteacher...

We had a very successful appointments process on Wednesday this week for our new Deputy Headteacher. We are now undertaking the required pre-employment checks, and anticipate being able to officially announce who the new post holder is on Monday 30th October... the successful candidate has penned a lovely introductory letter that you will receive on that first Monday back after half term.



Coats, Jumpers and General Winter Safety

Just a reminder that the autumn conditions and colder weather are now well and truly on their way. After half term, please make sure that your child brings to school every day at least a jumper to wear outside at break times. Ideally of course, they should also have a raincoat.

We of course hope that everyone has a safe and lovely half-term next week. Please do take the time to instil those messages of extra care for your children if they are going to be out and about near roads, especially given the shortening daylight hours.

My Only Moan

We are again seeing an increasing number of unauthorised parents driving into car park for drop-off and pick-up. This is fundamentally quite an unsafe thing to do, and is also totally unfair on the overwhelming majority of parents who respectfully adhere to the no parking rule. This car park is barely big enough to accommodate staff cars, let alone the vehicles of 400+ families. Common sense ought to dictate that by overloading an area in such close proximity to 600 children at the busiest crunch times, you are causing substantial risk of harm. Please stop so that we don't have to waste valuable staff time patrolling this problem again.

New School Menu

When we return after the October half term we will be starting our new school winter menus. You can find them by visiting our website at www.berrywood-pri.hants.sch.uk.

Many thanks,

Chris Reilly