

### Thank You

Many thanks to everyone for supporting the decision to ban Pokémon cards from school. I haven't seen a single one since our return, and I believe – for most children – these are fading into the rear view mirror of their thoughts. We have of course had a fair few wet playtimes recently, so it will be great to get the children outside and running around on a more regular basis soon.

The forecast for the week ahead is thankfully quite dry, but much colder. Please make sure children have jumpers and coats with them in school, as we will ask them to put these on when going out in colder temperatures. We do know we are not blessed with a great deal of classroom space to hang these, and understand how frustrating it is when items of school clothing become lost. However, it really is important that children are dressed appropriately for winter conditions.

### BSA – Annual General Meeting

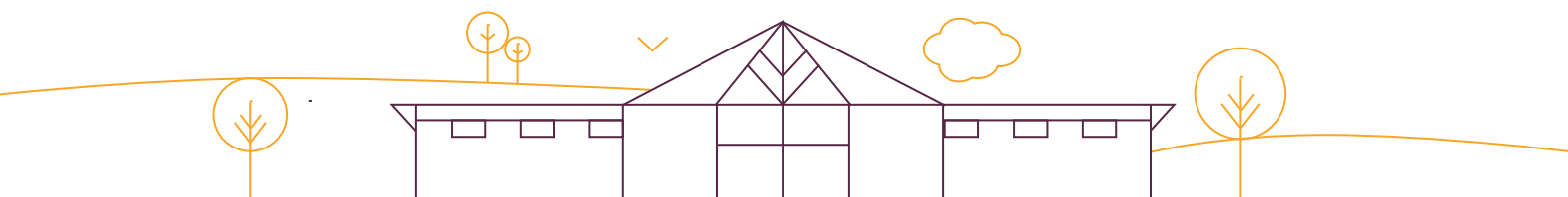
Here is your diary date reminder that the BSA AGM takes place this **Thursday from 6.30 – 7.30pm**. Every single parent is automatically a member of the association which seeks to raise funds for the school and form closer ties with members of staff. Please do come along to the School Hall if you are able to in order to show your support and find out a bit more about what goes on. It would be particularly pleasing to see our newer parents in the younger year groups taking an interest. All organisations such as these need new volunteers and fresh ideas, so please do come along and maybe add your voice to how future events are planned.

This year, long standing members of our committee are stepping down after giving fantastic service. This means we are on the lookout for new faces to take on some responsibilities. As per our constitution, we do need any potential nominations to be known before the meeting. Please do talk to me on the Courtyard or send an email if you have any questions, or are simply interested in finding out a little more. The agenda for the AGM is attached with this newsletter.

### Early Arrivals, Late Arrivals & Car Park Use

In the lead up to Christmas and in the early weeks of January, we have seen an increasing trend of some older children arriving too early to school. Just a gentle reminder that our gates open at 8.25, with the classroom doors opening shortly afterwards at 8.30. Some children have been waiting in quite heavy rain and cold conditions. Almost by way of contrast, an increasing number of children and families are arriving after the official start time of 8.45am. This really does throw the morning routines out for pupils and the teaching staff who are keen to get on with lessons. Any time between 8.25 – 8.45 is absolutely perfect!

Another gentle reminder, this time regarding use of the staff car park. Clearly, with 640 pupils attending Berrywood, we do not have enough car parking space to accommodate parents dropping off or picking up. This also includes when picking up from extra-curricular clubs after school. The only permitted use of the car park is for parents whose children attend Berries (before 8.00am or after 5.00pm) and for families with accessibility issues by prior arrangement with the school. Thank you in advance for your support with this.



### **Year Group Newsletters**

On Friday you hopefully received your termly newsletters from each of our Year teams. We hope you find the information useful. This is particularly relevant for class routines such as spellings, homework and PE days. Having read each one, it is clear to me that we have a busy term ahead with plenty of trips, curriculum projects and school visitors planned in. Thank you to our Year Team Leaders for coordinating these, and here's to a successful term of learning and achievement ahead!

### **Spring Concert**

Another date for some of your diaries is Thursday 23<sup>rd</sup> March, 9.00am – 10.30am. This is especially so if your child has instrumental lessons at Berrywood, or is keen on singing and being part of our choir. The Spring Concert is always a lovely occasion, and I know children are already rehearsing pieces in preparation for their performances.

### **Take up of Universal Free School Meals in Years R, 1 and 2**

Those of you with children in years R, 1 and 2 will be aware that they are provided with a universal free school meal. The funding for these meals is reimbursed to schools by calculating the number of meals taken on just 3 school Census days throughout the year (one each term). If school meal numbers are low on one of these days, the impact on the school budget could amount to thousands of pounds. Alongside this, there has been an increase in the cost of school meals this year that has not been applied to the reimbursement rate and therefore schools are already out of pocket. This makes it even more imperative that as many children as possible take up the offer of a free school meal this Thursday 19<sup>th</sup> January.

You may have noticed that we have historically changed the menu option in order to choose the most popular option of the week on a Census day. For this reason, we will again be changing the options for this week by swapping Wednesday 18<sup>th</sup> January with Thursday 19<sup>th</sup> January. All item choices on Thursday's menu, including jacket potato and pudding options, will be offered on Wednesday and options listed for Wednesday will be offered on Thursday. Please note this means that the very popular "Pizza Day" will be Thursday this week!

Please help us to maximise our school income by encouraging your child to have a school meal on Thursday.